

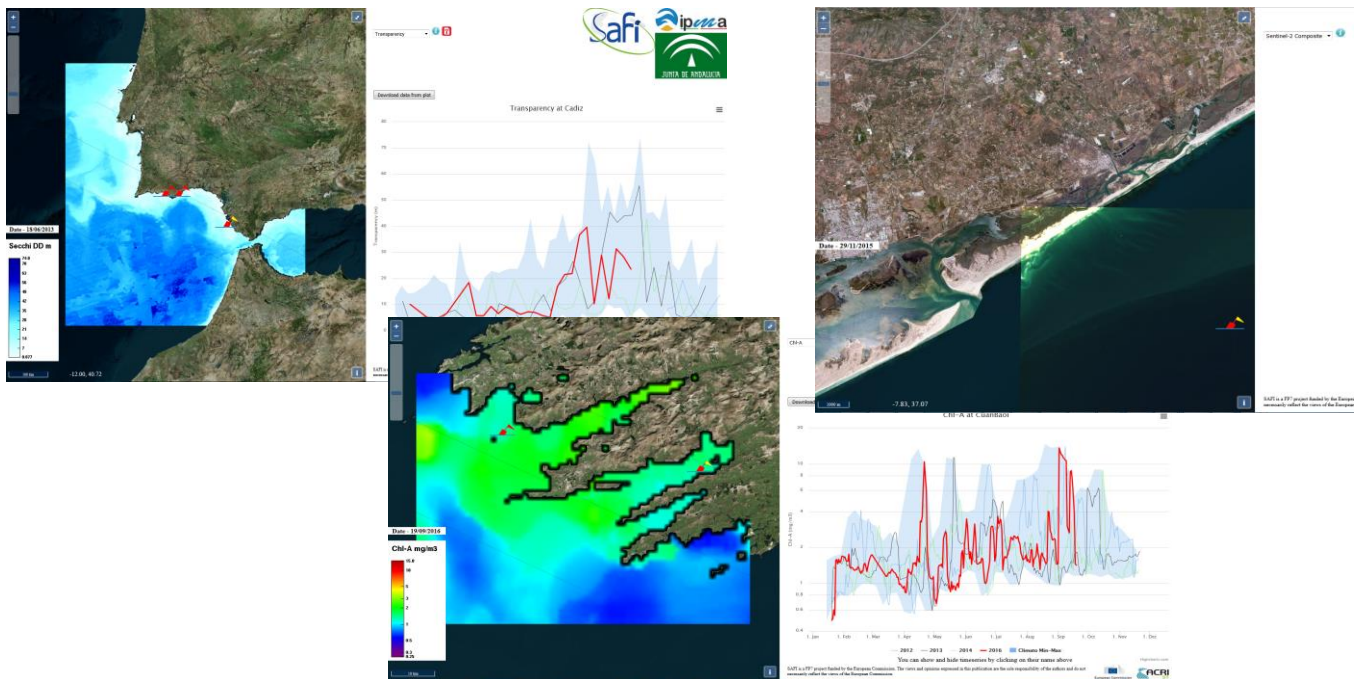


SAFI PRO SERVICE AND MINI-WEB TOOL

The SAFI Product Suite is offered to users through the mini-web server.

The SAFI toolbox offers two levels of service tailored to specific user requirements. **The Mini-web is a first level tool customised for each user profile of SAFI.**

The SAFI PRO Service and Mini-Web Tool provides a range of functions to users in the fisheries and aquaculture sectors. Relevant indicators developed through the SAFI project are made available for customised areas of interest for the user.



PICTURED (L-R): WATER TRANSPARENCY, SEA SURFACE TEMPERATURE, CHLOROPHYLL-A CONCENTRATION

The SAFI PRO service provides a comprehensive set of functionalities including:

- Access to the SAFI environmental database including historic and near-real-time data;
- Access to the SAFI designed indicators relevant to the activity;
- Maps presented over customised areas of interest;
- Time series extraction over users' locations of interest, with access to reference information from the climatology.

The SAFI Mini-web incorporates a series of layers of information/data, created by SAFI researchers according to the latest developments in Earth Observation technologies. These datasets are continually being updated to ensure temporal consistency, and expanded and adapted to in line with research developments requirements.

This tool ensures the access of the SAFI community to EU Copernicus programme resources.