



SAFI ADVANCED SERVICE AND WEB-GIS TOOL

Full access to the SAFI database is proposed through the SAFI advanced service. Remote processing (extractions, statistics, and data combination for spatial analyses) is offered from the databases.

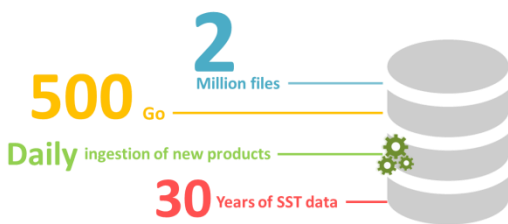


FIGURE 1: KEY FIGURES ON SAFI DATABASE

The SAFI toolbox offers two levels of service tailored to specific user requirements. **The webGIS is the highest level tool of the SAFI project.**

The SAFI Web-GIS tool provides a range of functions to users in the fisheries and aquaculture sectors.

Indicators developed through the SAFI project are available, customisable and tuneable through this tool.

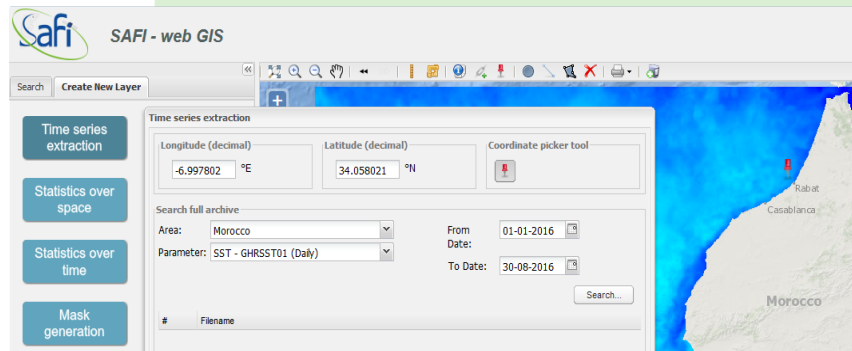


FIGURE 2: SAFI WEB-GIS PLATFORM FOR TIME SERIES EXTRACTION

The WebGIS tool provides a comprehensive set of functionalities including:

- In-depth access to the SAFI database including historic and near-real-time marine environmental data (from Earth Observation and models);
- Remote data processing capabilities for individual research needs;
- Time series extraction;
- Statistical analysis capabilities;
- Site identification based on user-specified criteria.

The SAFI WebGIS incorporates a series of layers of information/data, created by SAFI researchers according to the latest developments in Earth observation data exploitation. These datasets are continually being updated to ensure temporal consistency and expanded and adapted to research developments requirements.

This tool ensures the access of the SAFI community to EU Copernicus programme.

The SAFI WebGIS is using facilities from the ESA-funded Coastal Thematic Exploitation Platform (C-TEP) developed by ACRI and partners.